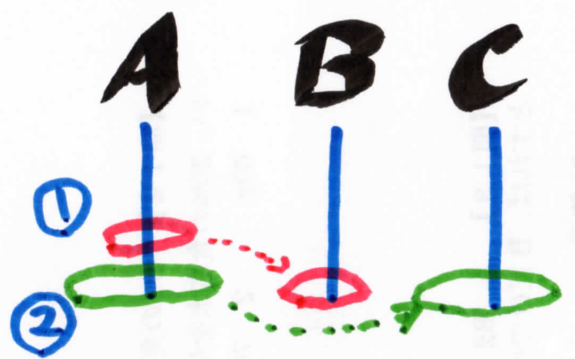


B/3

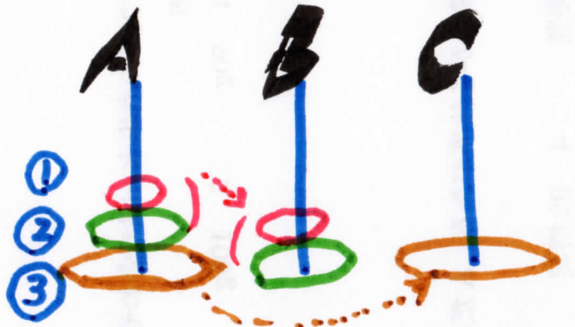
47%

2枚



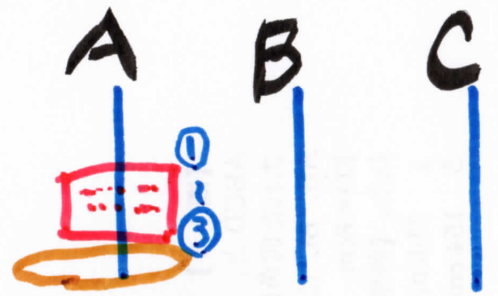
1. ①をBへ
2. ②をCへ (図)
3. ①をCへ: **完成 3回**

3枚



1. ①②をBへ (2枚と同. 3回)
 2. ③をCへ (図)
 3. ①②をCへ: **完成**
- 3+1+3=7回**

4枚



1. 3枚移動 **7回**
2. 1枚 " **1回**
3. 3枚 " **7回**

7+1+7=15回

5枚

15+1+15=31回

6枚

31+1+31=63回

A先: 3個以下... 勝ち

4個: 1個取り比3個残り 負け ⇒ 4個残すと
2 " 2 " 勝ち
3 " 1 "

5個... 1個取り4残り

6... 2 " 4 "

7... 3 " 4 "

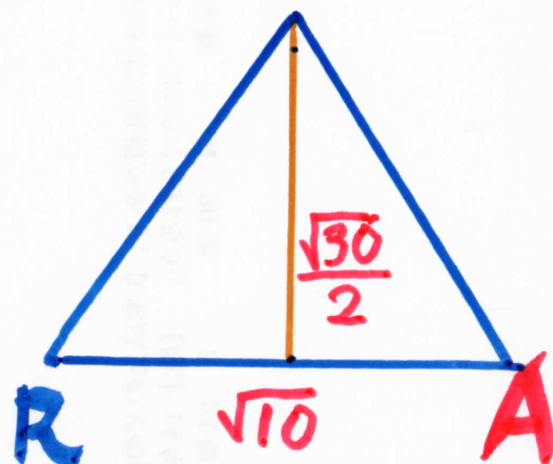
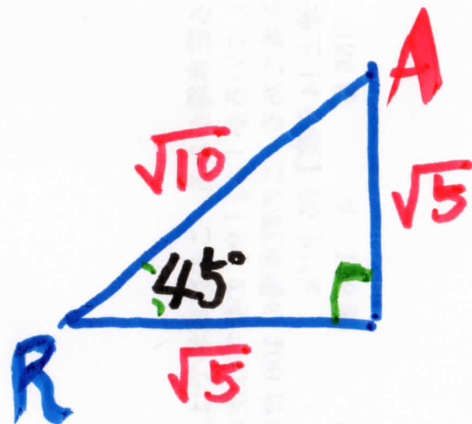
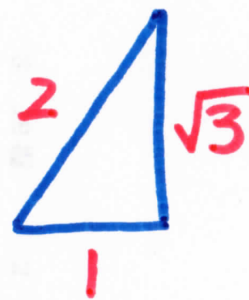
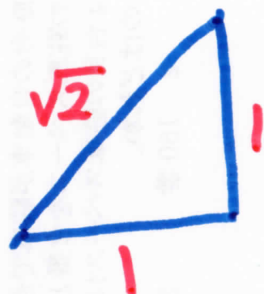
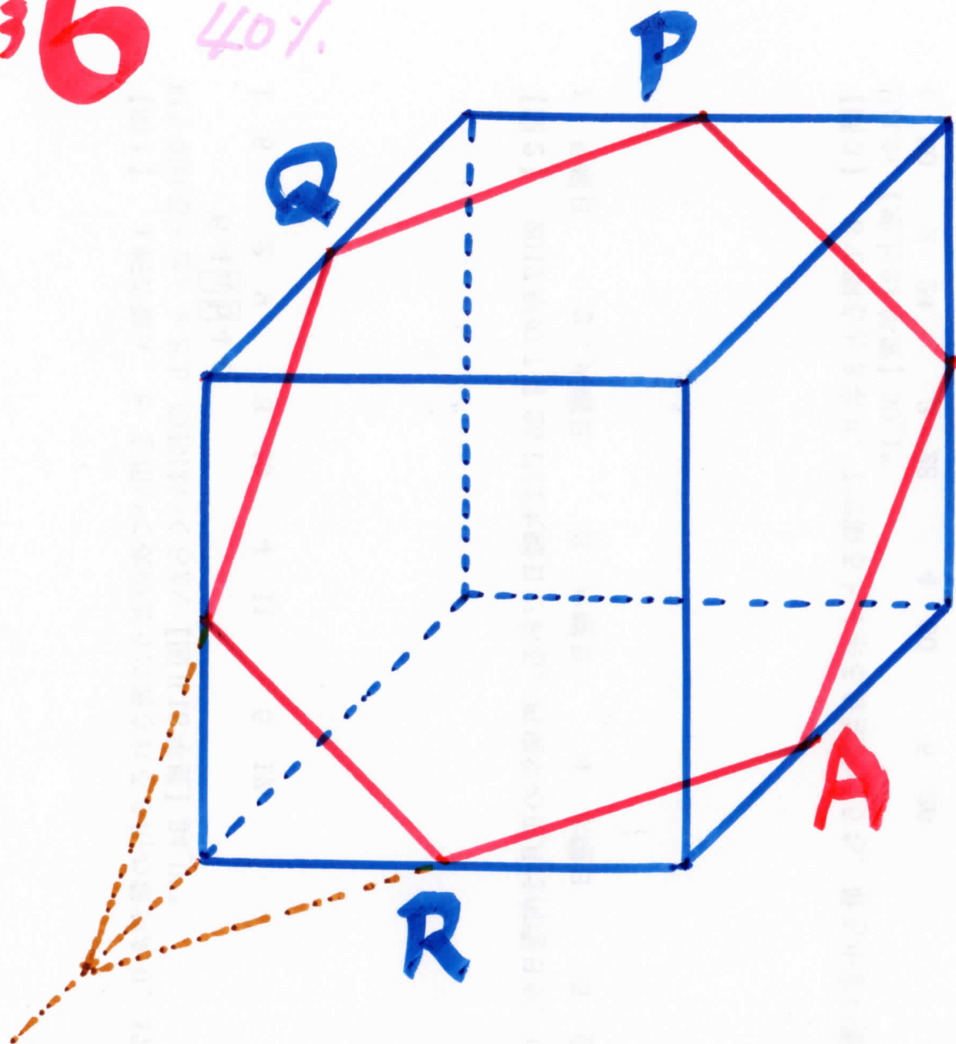
8... ... 7 負け

4の倍数残り
と勝ち

25-1=24

B13 6 40%

切出面は 正六角形



$$\sqrt{10} \times \frac{\sqrt{30}}{2} \div 2 \times 6 = \frac{\sqrt{300}}{2} \times 3 = \underline{\underline{15\sqrt{3}}}$$

面積は 6 コ分

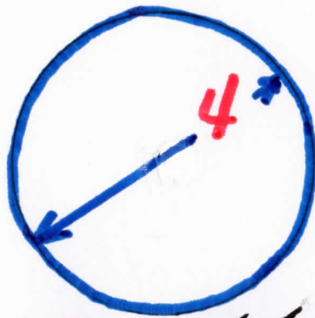
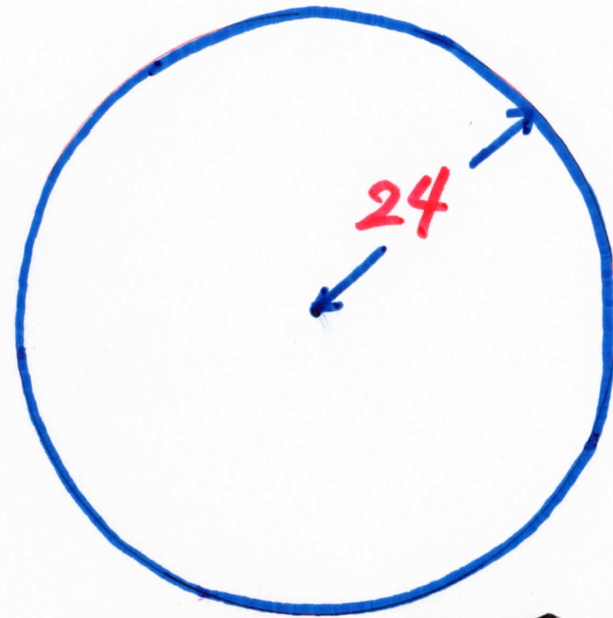
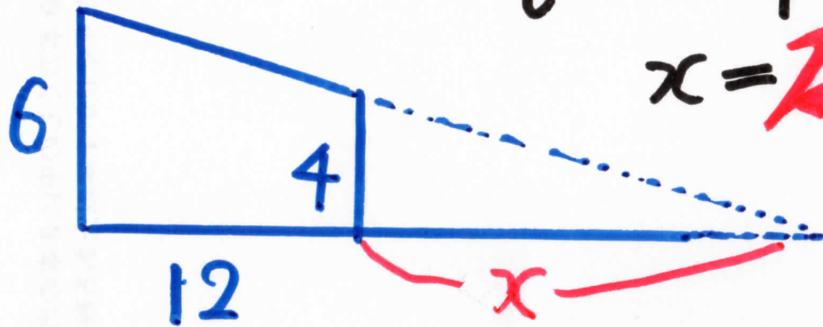
B13

8

45%

$$\frac{12+x}{6} = \frac{x}{4}$$

$$x = 24$$

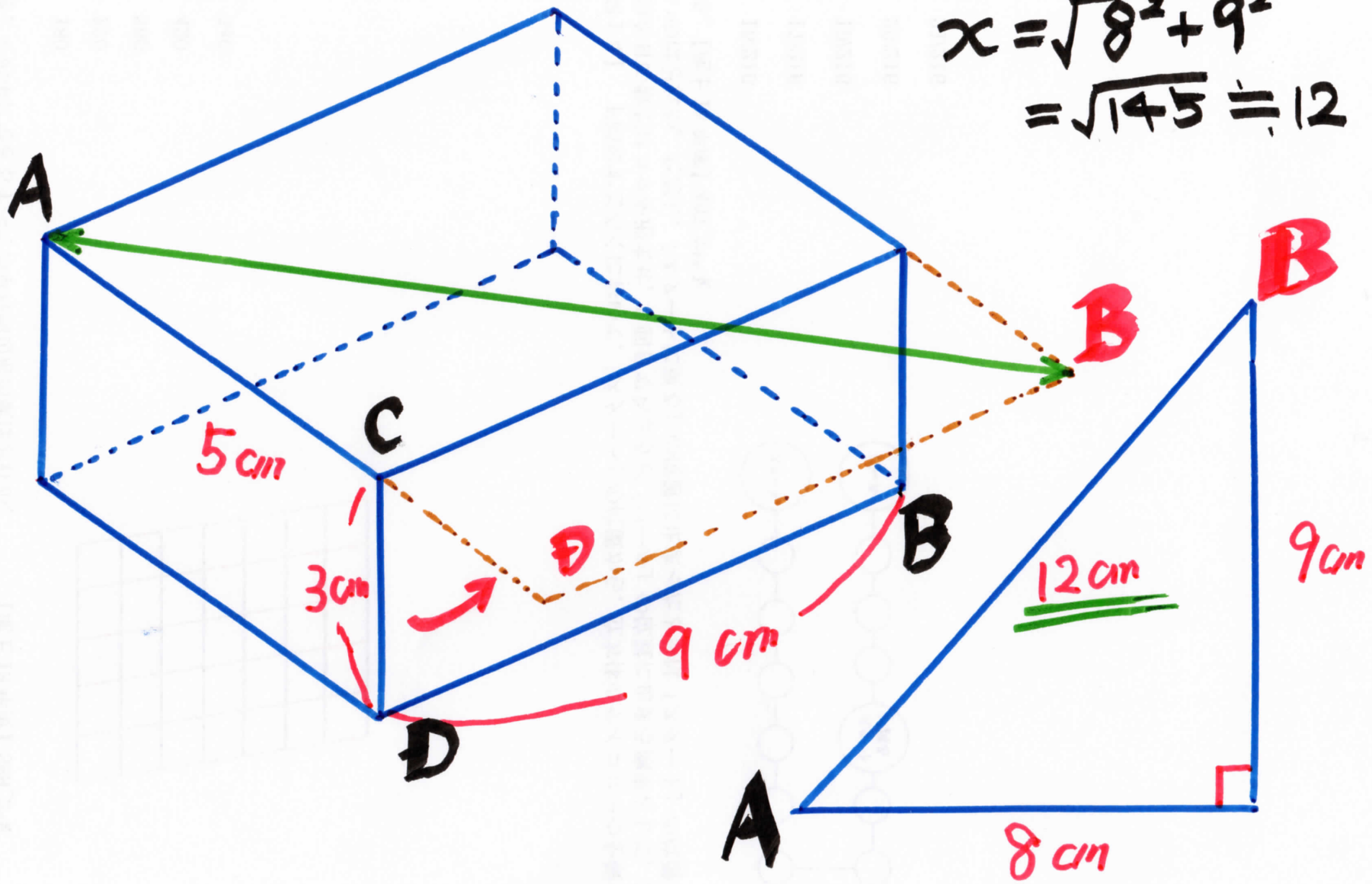


圓周: 4π

圓周: 48π

$$\frac{48\pi}{4\pi} = 12 \text{ 回轉}$$

B/3 **9** 44%



$$x = \sqrt{8^2 + 9^2}$$
$$= \sqrt{145} = 12$$